

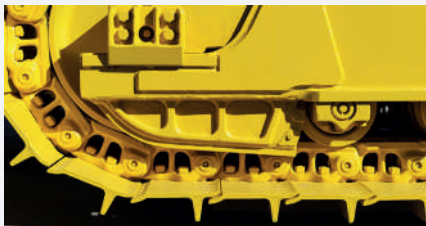
# ANTI-WEAR STEEL 29CrSiMoV8



## High wear resistant steel

### APPLICATION

- Steel used for **land extraction tools** and in components of major excavation machinery: payloaders nails, undercarriage parts, segments, ground engaging tools....
- Valid for the use in **high strength automotive components** with low weight requirements and high toughness demand.



### ADVANTAGES

#### High wear resistance

It is used in severe land extraction tools for major excavations

#### Good mechanical features at high temperatures

High tensile strength  
( $>1.650$  MPa) and yield strength ( $>1.300$  MPa)

#### Good toughness at high temperatures

Specific tests are required to evaluate toughness  
(Short rod toughness)

### APPLIED TECHNOLOGY

- **Specific steelmaking and rolling processes** to prevent segregations and to assure the toughness level required on the material.
- **High hardenability** to obtain martensitic microstructure of elevated toughness after the quenching and tempering treatment.