

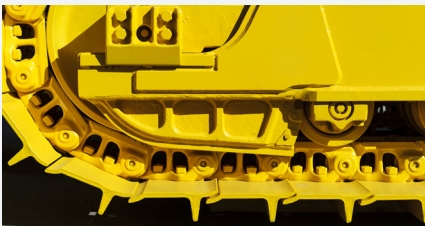
ANTI-WEAR STEEL 29CrSiMoV8



High wear resistant steel

APPLICATION

- Steel used for **land extraction tools** and in components of major excavation machinery: payloaders nails, undercarriage parts, segments, ground engaging tools....
- Valid for the use in **high strength automotive components** with low weight requirements and high toughness demand.



ADVANTAGES

High wear resistance

It is used in severe land extraction tools for major excavations

Good mechanical features at high temperatures

High tensile strength (>1.650 MPa) and yield strength (>1.300 MPa)

Good toughness at high temperatures

Specific tests are required to evaluate toughness (Short rod toughness)

APPLIED TECHNOLOGY

- **Specific steelmaking and rolling processes** to prevent segregations and to assure the toughness level required on the material.
- **High hardenability** to obtain martensitic microstructure of elevated toughness after the quenching and tempering treatment.